



**TOPROAD**

**TRAFFIC FACILITY INC.**

ONE STOP FOR ALL YOUR CONSTRUCTION NEEDS

**ROAD MARKING PAINT**



# Thermoplastic Reflective Road Marking Paint

## PRODUCT SPECIFICATION

### RAW MATERIALS

Glass beads(5-30%,customized)

Caco 3(60%-65%)

C5 resin(13%-16%)

Wax(1.2%)

Pigment (2%) and special materials

### Color:

White/yellow/red/blue/green/customized

### Construction temperature:

180-220°C

### Drying time:

<= 3 minutes

### Density:

1.8-2.1g/cm<sup>3</sup>

### Softening point:

110°C

### Compressive strength(mpa):

24

### Abrasion resistance(mg):

<= 60

### Packing:

25Kg/coatedplasticwovenbag

### Mobility:

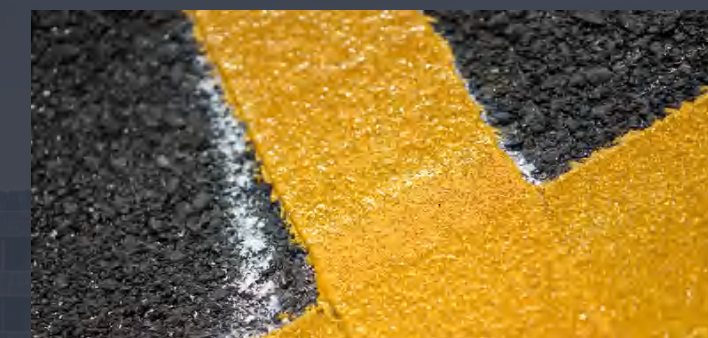
38S

### Constructiondosage:

3.5-5kg/square



THERMOPLASTIC ROAD MARKING PAINT-WHITE



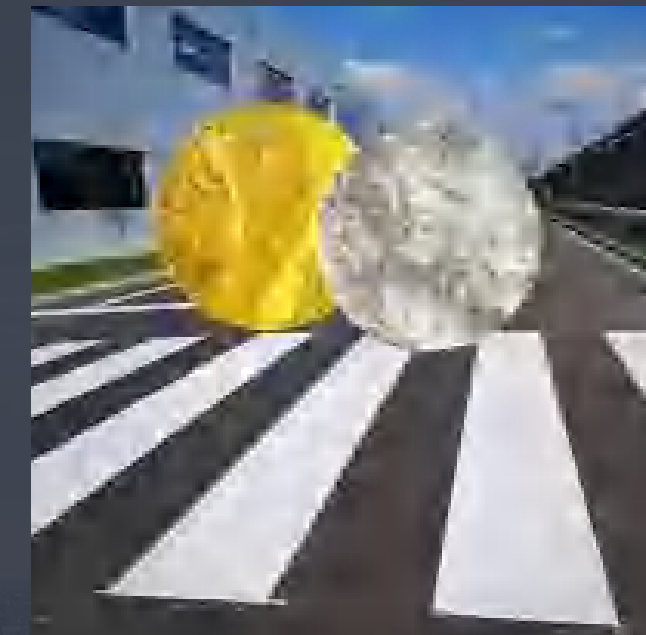
THERMOPLASTIC ROAD MARKING PAINT-YELLOW



COLORFUL THERMOPLASTIC ROAD MARKING PAINT



CONVEX THERMOPLASTIC ROAD MARKING PAINT-WHITE



ROAD MARKING PAINT





# Road Marking Glass Beads

## PRODUCT SPECIFICATION

### RAW MATERIALS

Recycled Glass, heavy metal glass

**Color:**

White/Colorless and transparent

**Construction temperature:**

180-220°C

**Drying time:**

<= 3 minutes

**Density:**

2.4-4.3g/cm<sup>3</sup>

**Refractive index:**

1.50 < RI < 1.70

**Magnetic particle content:**

<0.1%

**Compressive strength(mpa):**

24

**APPLICATION:**

**A Type:**

Premix glass beads(18-25 %) with hot-melting paint, and then spray on road surface by road line marker.

**B Type:**

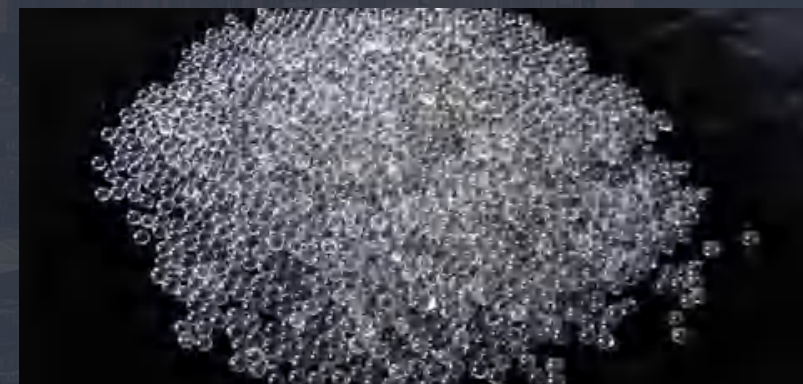
First spray road marking paint, and then drop glass beads on surface while paint is still wet.



01. The rounding rate is higher than 80%



03. Refractive index greater than 1.5



02. Retroreflection coefficient up to 250



04. In line with national highway use standards



# Dual-Fuel Thermoplastic Road Marking Preheater

## PRODUCT SPECIFICATION

**Model:**

ZH-YF1000/ZH-YF1200

**Size:**

<1730×1650×1550mm/1730×1650×1730mm

**Weight:**

1100kg/1280kg

**Paint Capacity:**

1000kg/1200kg

**Diesel Engine:**

15HP electric start

**Hydraulic Tank:**

60L

**Heating Stove:**

Direct , gas





# Hand Push Thermoplastic Road Marking Machine

## PRODUCT SPECIFICATION

**Model:**

ZH-ST150

**Size:**

1250×800×940mm

**Weight:**

110 kg (without hopper)

**Tank Capacity:**

100kg

**Glass beads box capacity:**

20kg

**Marking Thickness:**

1.2 - 2.5mm

**Marking width:**

150/200/300/400/450mm

**Arrow Marking Hopper:**

300mm

**Spreader Roller:**

Spreader

**Floor Knife:**

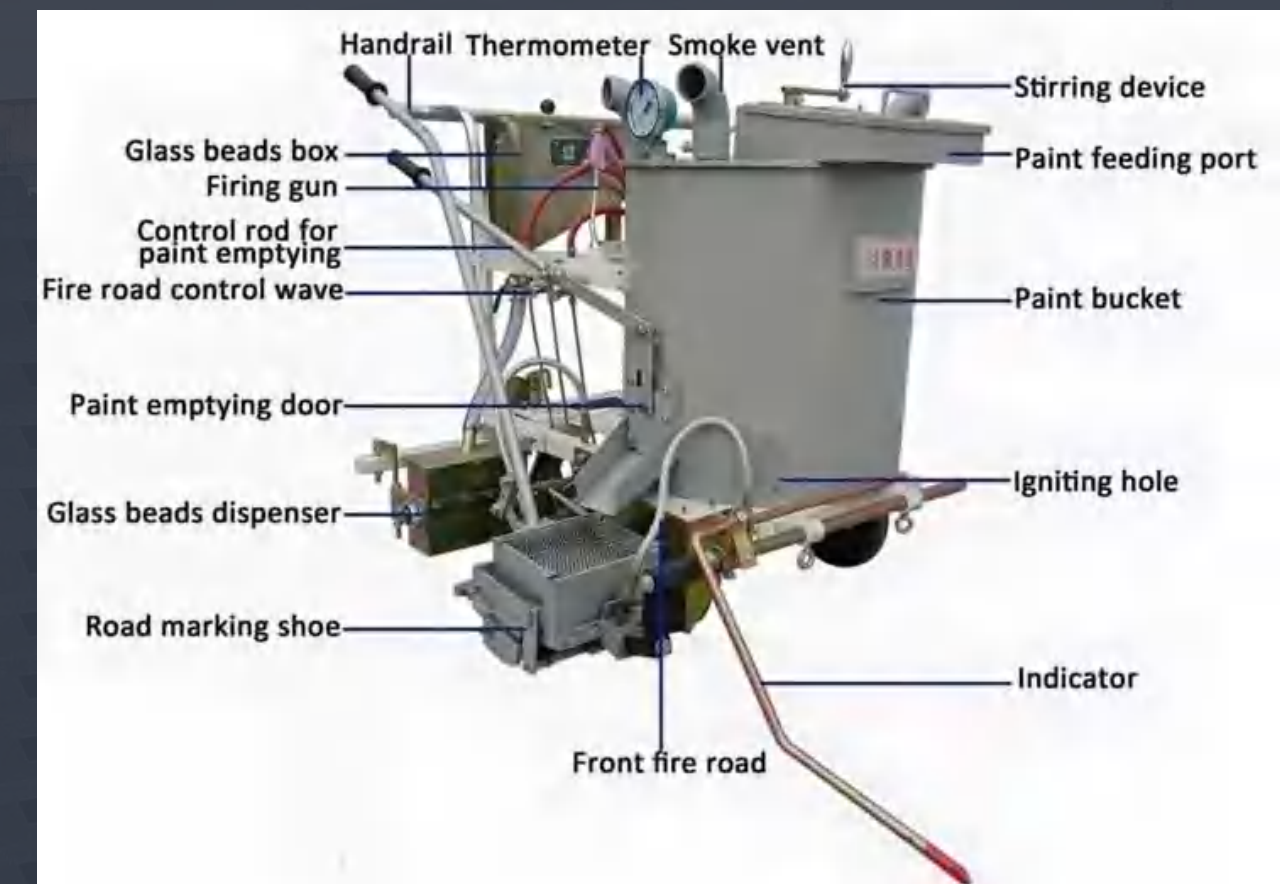
Floating carbide floor knives

**Zebra Marking Hopper:**

400/450mm

**Speed of Marking:**

1-1.5km/h





# Self-Propelled Thermoplastic Marking Machine

## PRODUCT SPECIFICATION

**Model:**

ZH-ZX150

**Size:**

1300×880×1000mm

**Weight:**

190kg(withouthopper)

**Glass Beads box Capacity:**

20kg

**Marking Thickness:**

12~2.5mm

**Marking Width:**

50/100/150/200/400/450mm

**Arrow Marking Hopper:**

300mm

**Zebra Marking Hopper:**

400/450mm

**Speed of Marking:**

2~3Km/h

**SpreaderRoller:**

Spreader

**Floor knife:**

Floating carbide floor knives

**Power:**

5.5HP Honda gasoline engine





# Oscillating Thermoplastic Road Marking Machine

## PRODUCT SPECIFICATION

**Model:**

ZH-ZD 200

**Size:**

1350x930x1050mm

**Weight:**

228kg(without hopper)

**Tank capacity:**

110 kg

**Glass bead box capacity:**

20kg

**Spreader:**

Roller spreader

**Floor knife:**

Carbide floor knives

**Sensed system Imported****Omron Sensor Power:**

5.5HP Honda Electric Engine

**Working Pressure:**

0.6MPa

**Basic Marking Thickness:**

1.8mm

**Convex Height:**

5-10mm

**Convex Spacing:**

0-999mm

**Marking Width:**

50/100/150/200/400/450mm

